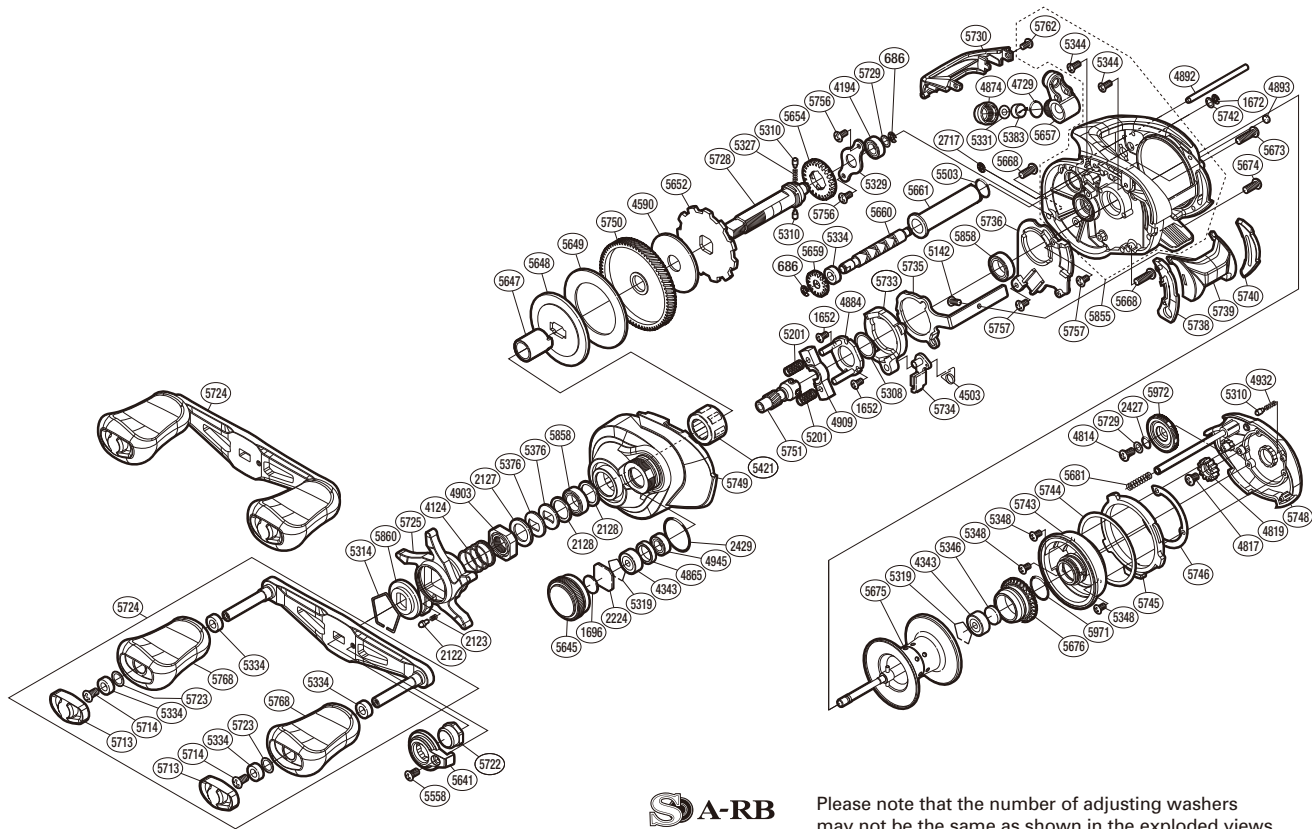


# SHIMANO

## CURADO

## CU-201HGK



**S A-RB**  
(51RH39K201X)

Please note that the number of adjusting washers may not be the same as shown in the exploded views. (Adjustment will vary with each individual product.)

Part No.	Description	Part No.	Description	Part No.	Description
BNT0686	E Lock	BNT5314	Click Plate Retainer	BNT5724	Handle Assembly
BNT1652	Screw	BNT5319	Bearing Retainer	BNT5725	Star Drag
BNT1672	E Lock	BNT5327	Idle Gear Spring	BNT5728	Drive Shaft
BNT1696	Cast Control Spacer	BNT5329	Drive Shaft Retainer	BNT5729	Spacer
BNT2122	Click Pin	BNT5334	Bushing	BNT5730	Level Wind Protector
BNT2123	Click Spring	BNT5344	Screw	BNT5731	Spacer
BNT2127	Star Drag Spacer	BNT5346	Spacer B	BNT5733	Clutch Cam
BNT2128	Washer	BNT5348	Screw	BNT5734	Clutch Pawl Assembly
BNT2224	Spool Tension Spacer	BNT5376	Washer	BNT5735	Clutch Plate
BNT2427	O Ring	BNT5383	Line Guide Pawl	BNT5736	Clutch Guard
BNT2429	O Ring	BNT5421	Roller Clutch Bearing	BNT5738	Clutch Bar Guide B
BNT2717	E Lock	BNT5503	O Ring	BNT5739	Clutch Button Assembly
BNT4124	Star Drag Spring	BNT5558	Screw	BNT5740	Clutch Bar Guide A
BNT4194	Ball Bearing	BNT5641	Handle Nut Plate	BNT5742	Washer
BNT4343	Ball Bearing	BNT5645	Cast Control Cap	BNT5743	Brake Case Assembly
BNT4503	Clutch Pawl Spring	BNT5647	Roller Clutch Inner Tube	BNT5744	Washer
BNT4590	Drag Washer	BNT5648	Key Washer	BNT5745	Right Side Plate Cam Lever
BNT4729	O Ring	BNT5649	Drag Washer	BNT5746	Washer
BNT4814	Screw	BNT5652	Anti-Reverse Ratchet	BNT5748	Right Side Plate Assembly
BNT4817	Screw	BNT5654	Idle Gear	BNT5749	Left Side Plate
BNT4819	Idle Gear	BNT5657	Line Guide Assembly	BNT5750	Drive Gear
BNT4865	Bearing Spacer	BNT5659	Idle Gear	BNT5751	Pinion Gear
BNT4874	Pawl Cap	BNT5660	Worm Shaft	BNT5756	Screw
BNT4884	Clutch Cam Retainer	BNT5661	Level Wind Guard	BNT5757	Screw
BNT4892	Stabilizer Bar	BNT5668	Screw	BNT5762	Screw
BNT4893	Washer	BNT5673	Screw	BNT5768	Handle Knob
BNT4903	Star Drag Nut	BNT5674	Screw	BNT5855	Frame Assembly
BNT4909	Yoke	BNT5675	Spool Assembly	BNT5858	Ball Bearing
BNT4932	Click Spring	BNT5676	Brake Ring Gear Assembly	BNT5860	Star Drag Click Plate
BNT4945	Ball Bearing	BNT5681	Spring	BNT5971	O Ring
BNT5142	Screw	BNT5713	Handle Knob Seal	BNT5972	Brake Dial
BNT5201	Yoke Spring	BNT5714	Screw		
BNT5308	Washer	BNT5722	Handle Nut		
BNT5310	Idle Gear Pin	BNT5723	Washer	BNT4692	B-100 Oil (Accessory)